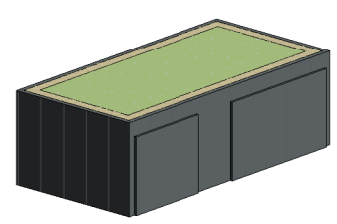


Key

For terraces & semis:

A double large bin and bike store is to be provided and shared between two units. Access from both sides.

A single bin and bike store for end of terrace units. Half the size of above. Access from one side.



• Large Store

Bin provision per unit:
(1) 140L Black bin
(2) 240L Green bin
(3) 25L Brown Caddy
(4) 140L Bags space

2000
4010
Bike Bin

For common access flats A & B:

Bin provision for 9 flats:
(1) 2 x 660L recycle bin
(2) 2 x 660L black bin
(3) 240L food waste
(4) 5m² Reuse/Bulky storage

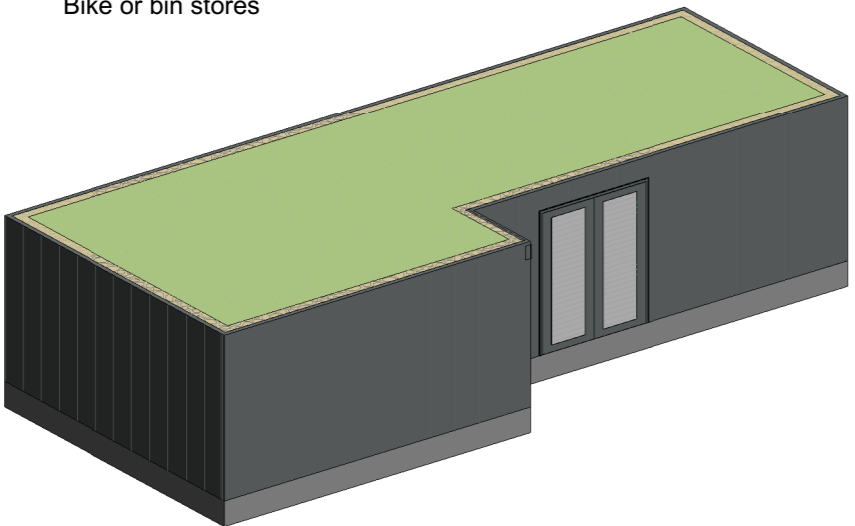
Shed storage for terraces and semis

Storage for garden tools and bicycle if needed

2m²

Proposed Storage Strategy
1 : 500

Key
For Walkups & Apartments
Bike or bin stores



Large Bike Storage - This bike store provides storage for multiple dwellings, including the apartments and walk ups.

Large Bin Storage - Sometimes combined with bike storage, bin stores can be seen at the ends of walk up terraces.

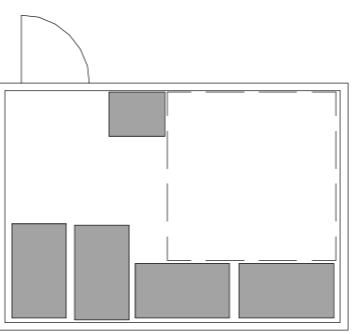
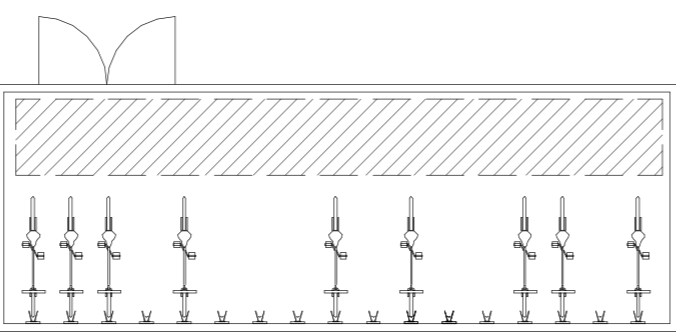
Size of the bike store is subject to number of dwellings it serves (shown on plan)

Size of bin stores subject to number of dwellings it serves (shown on plan)

Finish to match that of the external standing seam cladding on other storage with a green roof.

Finish to be standing seam cladding as rest of site with green roof.

Typical Example Layouts



P01	S0	24.12.25	AP	Issued for PAC
Rev	Status	Date	Check	Description

HolderMathiasarchitects

T +44 (0) 20 7287 0735
www.holdermathias.com
London Cardiff Munich

Project
Clydesmuir
Cardiff
Pegasus

Title
Proposed Storage Strategy Plan

Job No Scale at A2 Classification Status Revision
4594 As indicated S0 P01

Project - Originator - Functional Breakdown - Spatial Breakdown - Form - Discipline - Number
CMWW-HMA-ZZ-ZZ-D-A-90005

ISO 14001 : 2015 ISO 9001 : 2015 RIBA Chartered Practice
Please consider the environment before printing this document
Refer to dimensions where provided- do not scale from this drawing